



"Europe as a Global Actor" EU-LAC-MUSEUMS



University
of
St Andrews

Karen Brown and James Brown (University of St Andrews, Scotland – Coordinator)
Karin Weil (Universidad de Austral, Chile – Beneficiary)
Brussels, 5 December 2016



**EULAC
MUSEUMS**

Museums and Community:
Concepts, Experiences and Sustainability in
Europe, Latin America and the Caribbean

This project has received funding from the European Union's Horizon 2020 research and innovation programme under grant agreement No. 693669



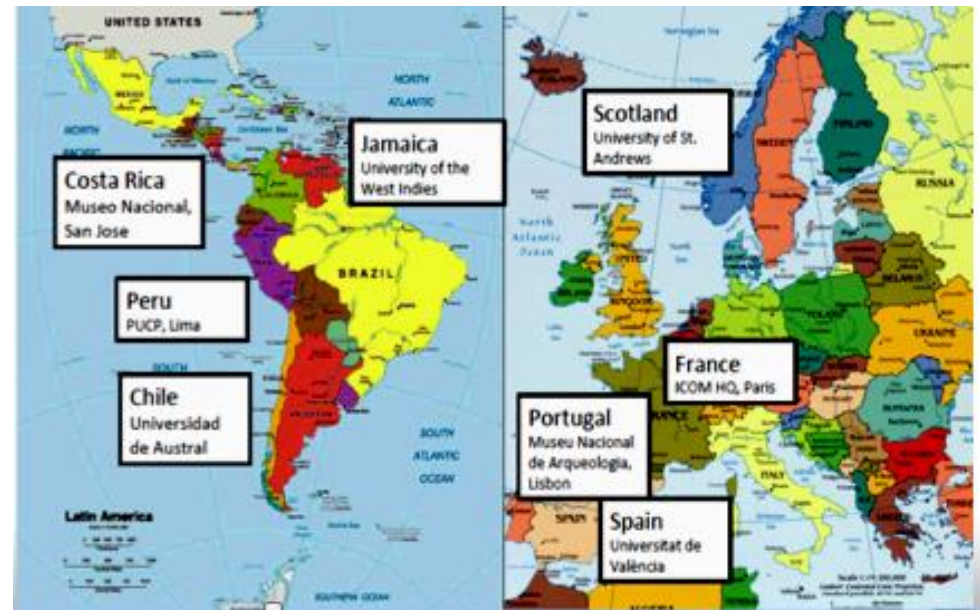


EU-LAC-MUSEUMS: Museums and Community: Concepts, Experiences and Sustainability in Europe, Latin America and the Caribbean



Key Facts:

- **8 International partners** in Scotland, Portugal, Spain, France, Peru, Costa Rica, Chile, West Indies, with the University of St Andrews as coordinator.
- Consortium formed through networks of the European and Latin American and Caribbean Regional Alliances of the **International Council of Museums (ICOM)**: www.icom.museum.
- Funding amount: €2,422,406.50
- 8 Work Packages running for 48 months from 01 September 2016.



TODAY:

“Reflections on the consortium's preliminary understanding of the issue(s)/problem(s) to be addressed by our project”.

Horizon2020 – The bigger picture

Societal Challenges

1. Health, demographic change and wellbeing
2. Food security, sustainable agriculture and forestry, marine and maritime and inland water research and the bioeconomy
3. Secure, clean and efficient energy
4. Smart, green and integrated transport
5. Climate action, environment, resource efficiency and raw materials
6. Inclusive, innovative and reflective societies
7. Secure societies



EULAC
MUSEUMS

Museums and Community:
Concepts, Experiences and Sustainability in
Europe, Latin America and the Caribbean
SCOTLAND



International Cooperation Calls 2014-2015 (H2020-INT)

INT-1-2014/2015	Enhancing and focusing research and innovation cooperation with the Union's key international partner countries
INT-2-2014/2015	Encouraging the research and innovation cooperation between the Union and selected regional partners
INT-3-2015	Europe's contribution to a value-based global order and its contestants
INT-4-2015	The EU's contribution to global development: in search of greater policy coherence
INT-5-2015	Rethinking the EU crisis response mechanism in light of recent conflicts
INT-6-2015	Re-invigorating the partnership between the two shores of the Mediterranean
INT-7-2015	Towards a new geopolitical order in the South and East Mediterranean region
INT-8-2015	The European Union and the Eastern Partnership
INT-9-2015	The EU, Turkey and its wider neighbourhood: challenges and opportunities
INT-10-2015	The EU and integration challenges in the Balkans
INT-11-2015	European cultural and science diplomacy: exploiting the potential of culture and science in the EU's external relations
INT-12-2015	The cultural, scientific and social dimension of EU-LAC relations



**EULAC
MUSEUMS**

Museums and Community:
Concepts, Experiences and Sustainability in
Europe, Latin America and the Caribbean

SCOTLAND



Topic H2020-INT-12-2015

The cultural, scientific and social dimension of EU-LAC relations

Scope

Research under this topic should critically examine past and present cultural, scientific, intellectual and social exchanges between individuals, countries and regions within the wide EU-CELAC area, with a view to determining synergies and cross-fertilization, as well as identifying asymmetries in bi-lateral and bi-regional relations.

Research should be focused on those areas that are deemed crucial to explain the current state of play of relations between EU and LAC, and those that are considered strategic for future interaction and cooperation between the two regions.



**EULAC
MUSEUMS**

Museums and Community:
Concepts, Experiences and Sustainability in
Europe, Latin America and the Caribbean
SCOTLAND



Topic H2020-INT-12-2015

The cultural, scientific and social dimension of EU-LAC relations

Expected impact

Research under this topic will provide a better understanding of the cultural, scientific and social dimension of the relationship between the EU and LAC, thus supporting the process of EU-CELAC cooperation outlined by the EU-CELAC Action Plan 2013-2015 in defining a common vision for the years to come.

Research will contribute to the understanding of the role of social actors in both societies and to encourage mutual knowledge between the two regions, thus feeding into the work of the EU-LAC Foundation²⁷. Research is also expected to inform the on-going bi-regional networking activities of the JIRI and the work of the Trans-Atlantic Platform for the Social Sciences and Humanities (T-AP).



**EULAC
MUSEUMS**

Museums and Community:
Concepts, Experiences and Sustainability in
Europe, Latin America and the Caribbean
SCOTLAND



EU-CELAC ACTION PLAN 2013-2015 ¹

This Action Plan includes a number of initiatives consistent with the priorities established at the VI EU-LAC Summit as encompassed in its Final Declaration as well as in new areas incorporated at the VII EU-LAC Summit / I EU-CELAC Summit held in Santiago de Chile on 26-27 January 2013. The Action Plan identifies instruments and activities which, if properly implemented should lead to concrete results guaranteeing ownership and capacity building in the following key areas, which are directly or indirectly linked with the central theme of the Summit:

1. Science, research, innovation and technology;
2. Sustainable development; environment; climate change; biodiversity; energy;
3. Regional integration and interconnectivity to promote social inclusion and cohesion;
4. Migration;
5. Education and employment to promote social inclusion and cohesion;
6. The world drug problem;
7. Gender;
8. Investments and entrepreneurship for sustainable development.



This Action Plan includes a number of initiatives consistent with the priorities established at the VI EU-LAC Summit as encompassed in its Final Declaration as well as in new areas incorporated at the VII EU-LAC Summit / I EU-CELAC Summit held in Santiago de Chile on 26-27 January 2013. The Action Plan identifies instruments and activities which, if properly implemented should lead to concrete results guaranteeing ownership and capacity building in the following key areas, which are directly or indirectly linked with the central theme of the Summit:

1. Science, research, innovation and technology;
2. Sustainable development, environment, climate change; biodiversity; energy;
3. Regional integration and interconnectivity to promote social inclusion and cohesion;
4. Migration;
5. Education and employment to promote social inclusion and cohesion;
6. The world drug problem;
7. Gender;
8. Investments and entrepreneurship for sustainable development.



□ PARTNER

EU-CELAC ACTION □

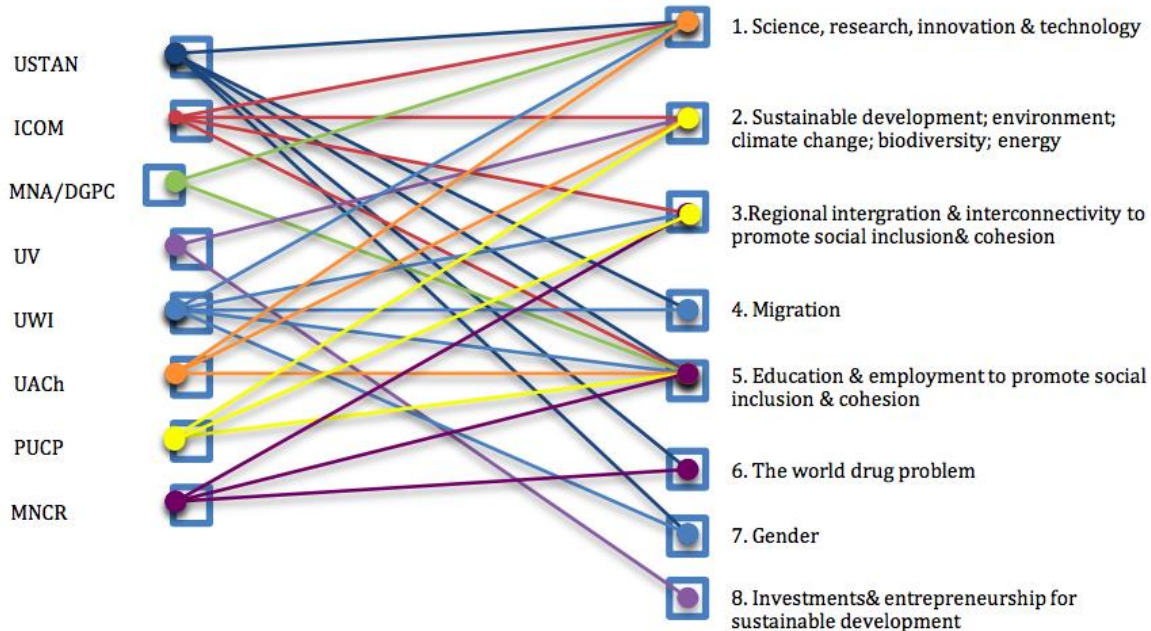
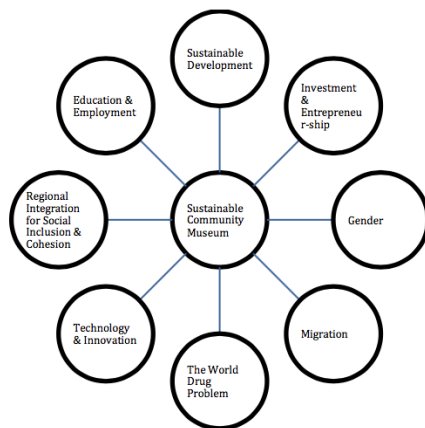


Figure 2. Partner expertise relating to the EU-CELAC Action Plan (2013-15)



Social Inclusion and Cohesion through Community Empowerment



Local Museum intergenerational workshops



Consortia workshops

Figure 4. The Sustainable Community Museum based on EU-CELAC principles

EU-LAC-MUSEUMS: Bi-Regional Integration

Our Youth Exchange



Isle of Skye,
Scotland



Confidence
Building

Learning
Skills &
Discussing Life

Exploring
their communities



Porto,
Portugal



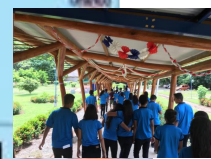
Youth Empowerment

Using Blogs to
share and sustain
culture



Active
Citizenship

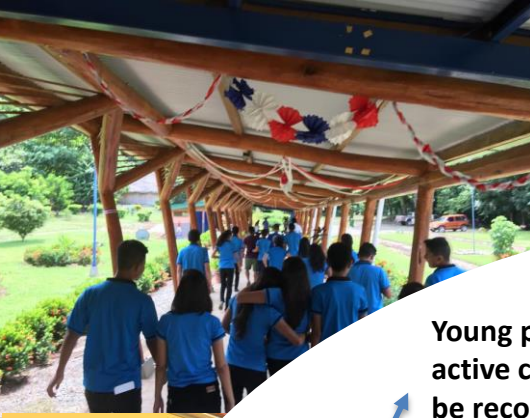
Being part of
Decision Making



Boruca, Rey
Curre & San
Vicente, Costa
Rica



EU-LAC-MUSEUMS: Bi-Regional Youth Exchange



Young people's commitment, active citizenship and participation to be recognised at the University of St Andrews award ceremony. Attended by academics, researchers and students.

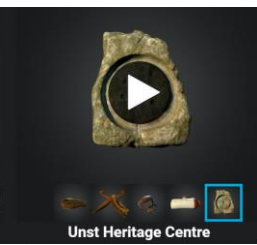
Young People encouraged to be part of decision making bodies. Not just join but play an active important role. (e.g. NGOs, Councils, Youth Parliament & Voluntary Groups)

Youth Empowerment Impact on Policy

EU-LAC Foundation:
Connecting, Promoting, Dynamising & Circulating Knowledge.

Building on its aspirations, empowering young people to take part influencing change. Creating links between not just countries but communities.



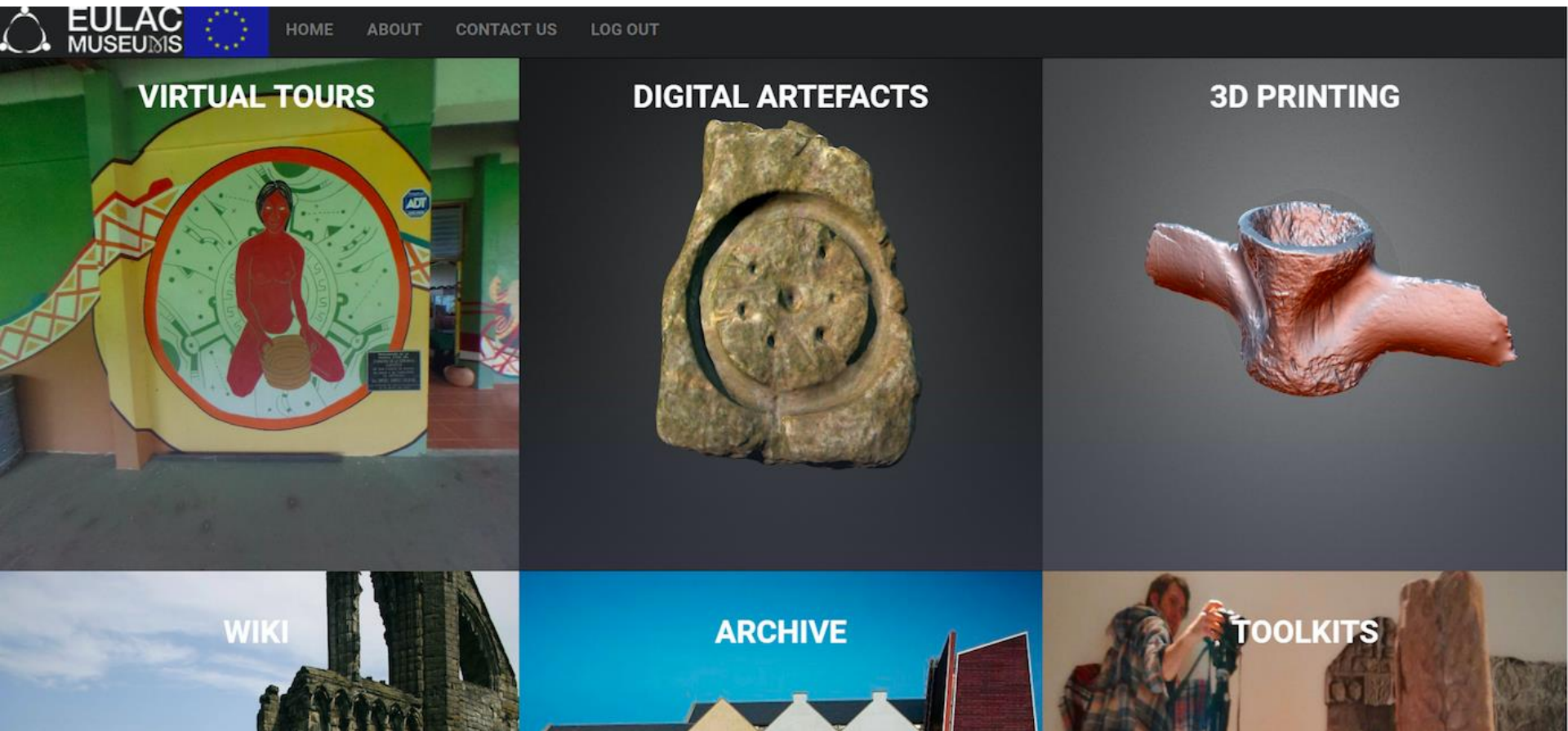


Science, Research, Innovation and Technology

DIGITAL HERITAGE



Bi-regional sharing of digital artefacts and Intangible Cultural Heritage through the project website and Virtual Museum



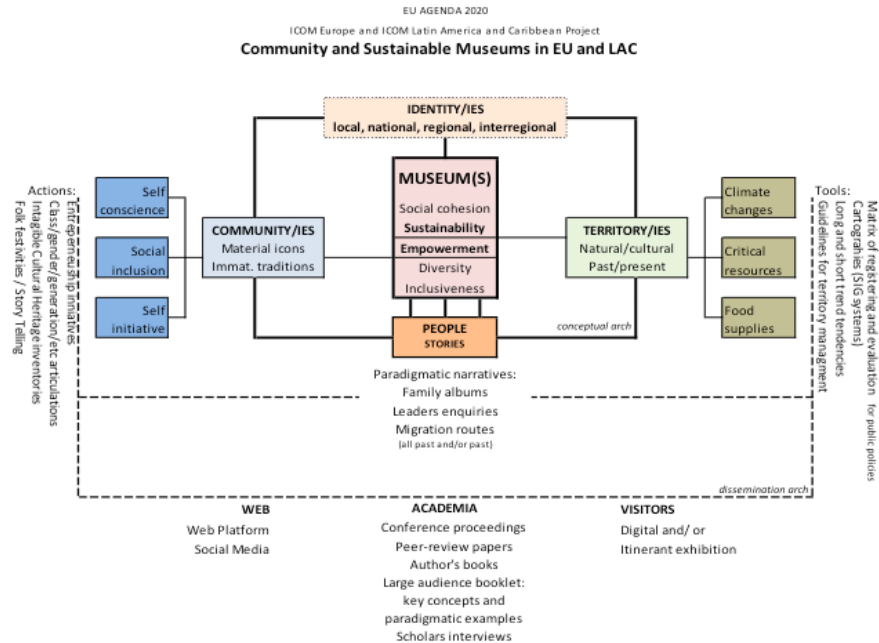
Dissemination & Exploitation of results

Dissemination

Sharing research results with potential users/peers

in the research field, industry, other commercial players and policymakers

- Academic publications
- Workshops and conferences
- Integration of results in academic curricula



Exploitation

Using research results or commercial purposes or in public policy making/formulation

- Policy briefs and policy papers
- Research-to-policy dialogues
- Policy reviews



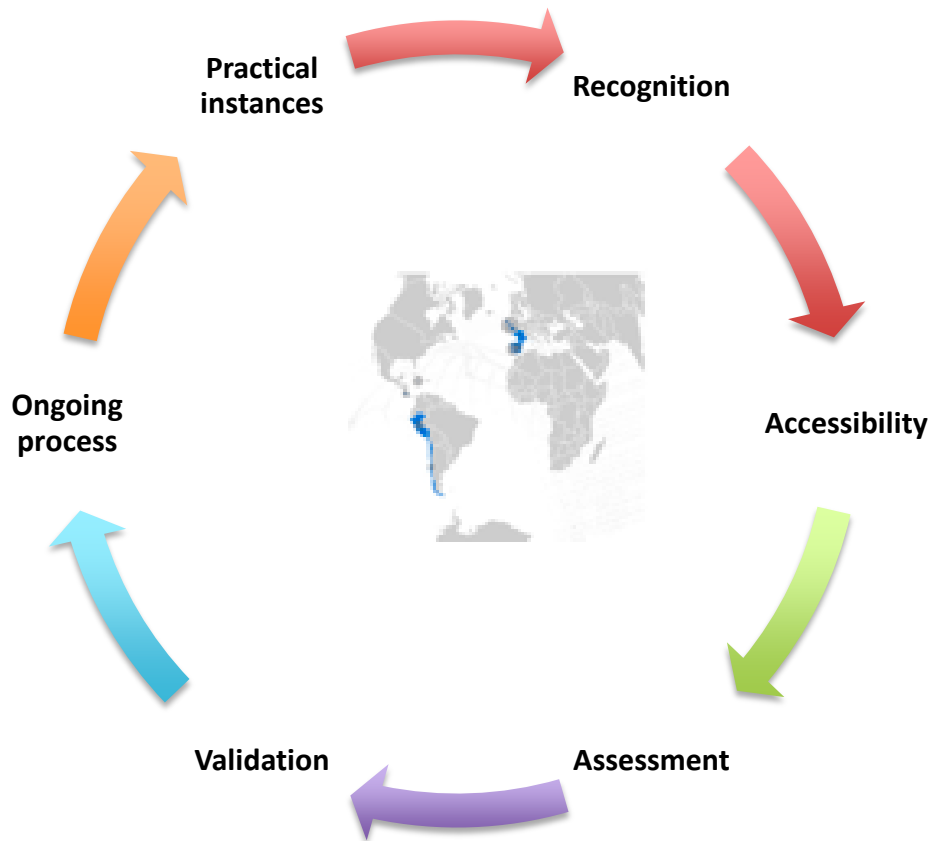
EULAC
MUSEUMS

Museums and Community:
Concepts, Experiences and Sustainability in
Europe, Latin America and the Caribbean
SCOTLAND



Building Sustainable EU-LAC Relations

Construction of shared meanings: through the processes of associativity (EU LAC Consortium)

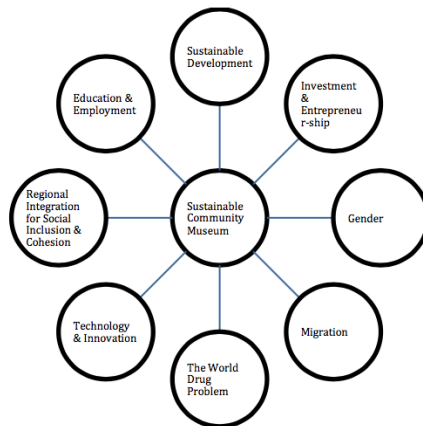


According to the International Council Of Museum Statutes, adopted by the 22nd General Assembly in Vienna, Austria on August 24th, 2007:

“A museum is a non-profit, permanent institution in the service of society and its development, open to the public, which acquires, conserves, researches, communicates and exhibits the tangible and intangible heritage of humanity and its environment for the purposes of education, study and enjoyment.”



Social Inclusion and Cohesion through Community Empowerment



Local Museum intergenerational workshops



Consortia workshops

Figure 4. The Sustainable Community Museum based on EU-CELAC principles



Home / News / EU-LAC Museums project launched under Lisbon sun

EU-LAC Museums project launched under Lisbon sun

On 1 November at the National Archaeological Museum in Lisbon, Portugal, the first meeting of the EU-LAC-MUSEUMS project, "Museums and Community: Concepts, Experiences, and Sustainability in Europe, Latin America and the Caribbean", will be held.



This partnership between the European and Latin American & Caribbean Regional Alliances of ICOM was established during the 2014 ICOM Advisory Meeting. In March 2016, the project consortium of eight partners in total, including ICOM, won a grant from the EU. Over four years, from September 2016 to 2020, in the framework of "Museums and Community: Concepts, Experiences, and Sustainability in Europe, Latin America and the Caribbean (EU-LAC-MUSEUMS)", the close connections between Europe and Latin America and the Caribbean in the field of community museology will be studied by exploring the cultural, scientific and social dimensions of EU-LAC relations.



Press releases

- International Museum Day 2016: Museums and Cultural Landscapes "
- World's Museums in Milan "
- International Museum Day 2016: Museums and Cultural Landscapes "
- Two new ICOM tools to fight illicit traffic in cultural goods "

[All press releases](#)

Karen Brown, Board member of ICOM Europe presents ICOM LAC - ICOM Europe project



Dr Karen Brown speaking at ICOM Portugal meeting ahead of the meeting of the EU-LAC project in Lisbon next week



Comment

zki, Minna Kajaste, Pauline Rild and 14 others like this

Impact on Policy:

The International Council of Museums Regional and National committees:

- **International Museums Day** (2017) "Museums and Contested Histories"; (2018) "Hyperconnected Museums: New Approaches, New Publics"
- **Triennial conference** Kyoto, 2019 (3000 participants from the world museum community)

Folk Festivals



Bi-regional youth exchange



Paradigmatic case studies



Museums and Community: Concepts, Experiences, and Sustainability in Europe, Latin America and the Caribbean



Ambitious Web Portal

Models of sustainability and integral management



Touring Fine Art Exhibition on Migration and Memory



VIRTUAL MUSEUM OF MIGRATION HISTORIES



Bi-regional research on museums, sustainability and social inclusion