

**Bravery and a Sense of Place in
Abandoned Lands**

**THE CASE FOR THE
EUROPEAN FAR-WEST**

Luís Raposo

Member of the Steering Committee of EULAC MUSEUMS

Head of Research, National Museum of Archaeology, Lisbon, Portugal

Vice-President of the Portuguese Association of Archaeologists

President of ICOM Europe

“Migration” viewed from the central European fortress
is mainly a matter of...

Immigration

However...

Viewed from the outside
(including “peripheries” like the Europe’s Far-West lands),
it is rather a matter of...

Emigration



Portugal é o 12.º país do mundo com mais emigração

ALEXANDRA CAMPOS 28/10/2011

Portugal is the 12th country in the world with more emigration

A conjugação da alta emigração com a baixa imigração coloca Portugal na lista dos países de "repulsão".



Expresso

SOCIEDADE

Portugal tem a maior taxa de emigração da União Europeia

08.07.2015 às 9h18

Portugal has the highest emigration rate in EU



Portugal é o segundo país da UE com maior número de emigrantes

19 Jul 2015 **Económico** com Lusa

Portugal is the 2nd country in EU with more emigration

Entre dois milhões e 2,5 milhões de portugueses estavam emigrados em 2013, principalmente para a Alemanha, com dados da ONU e do Banco Mundial, citados no relatório do Observatório da Emigração relativo ao ano passado.

Há 31,2 milhões de portugueses no mundo

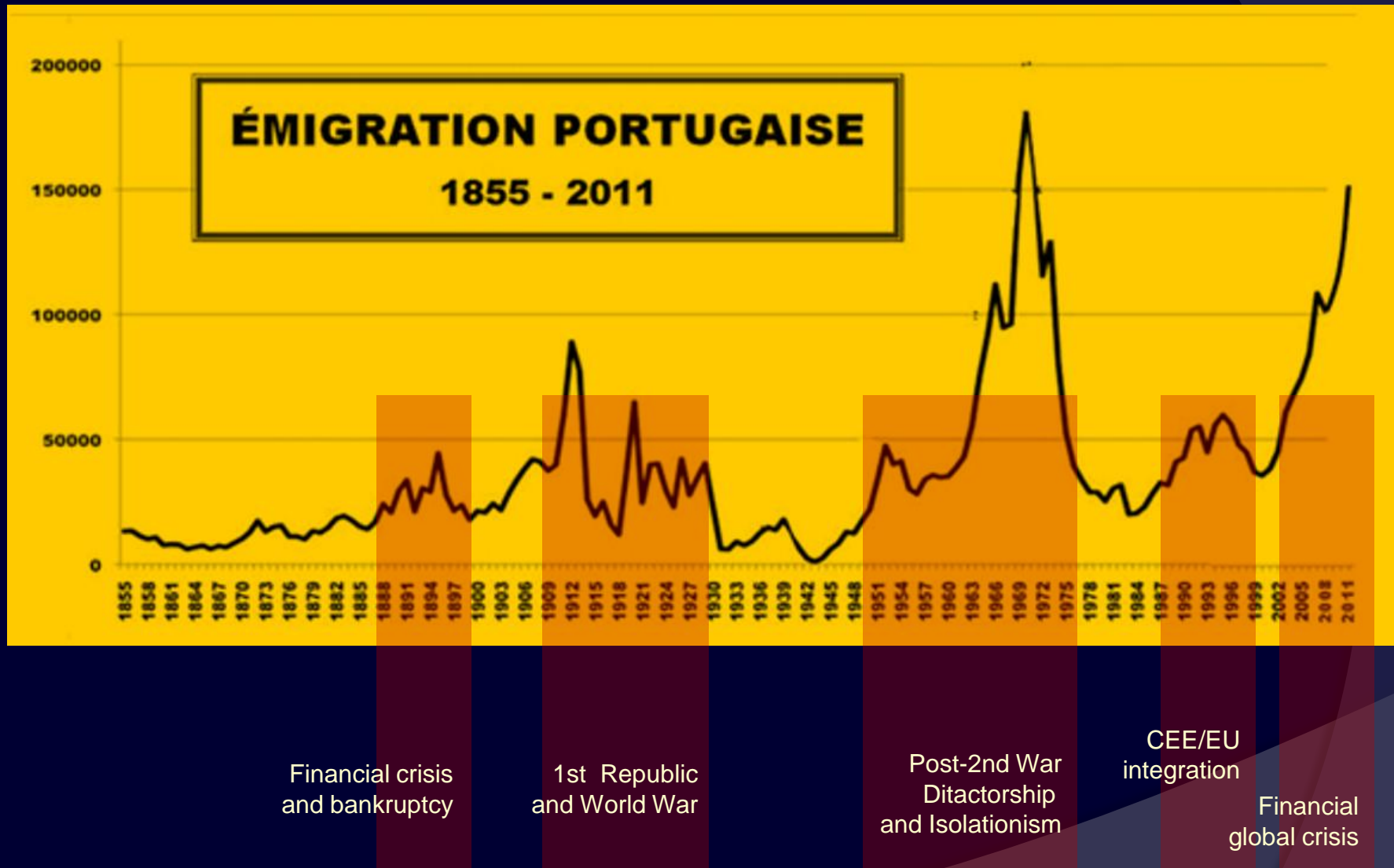
There are 31,2 million portuguese in the world (less than 10 millions in Portugal)

Se não fosse a emigração, o número de portugueses no mundo seria mais de 40 milhões de habitantes.

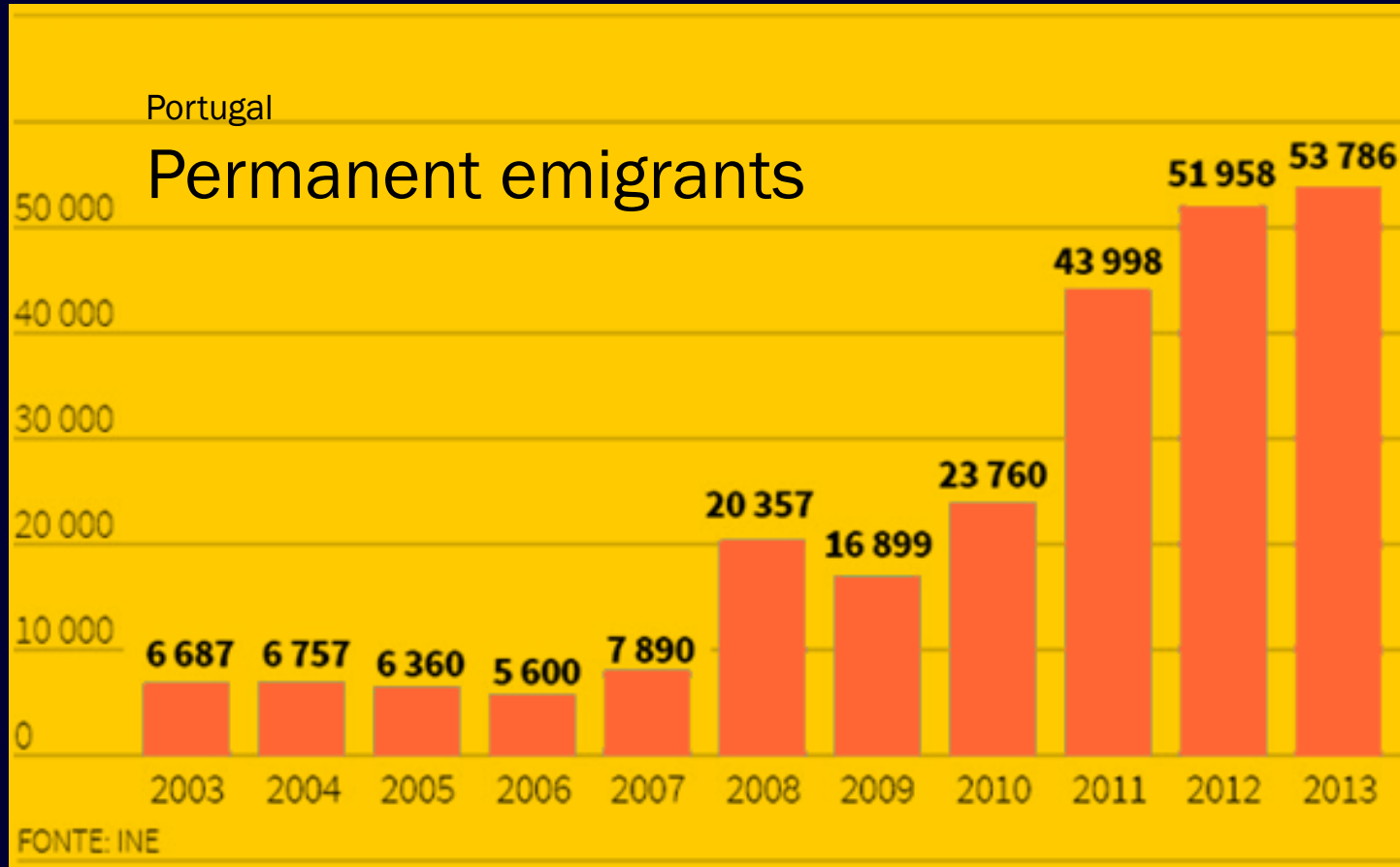
2009-04-05 10:49 Redação / PP



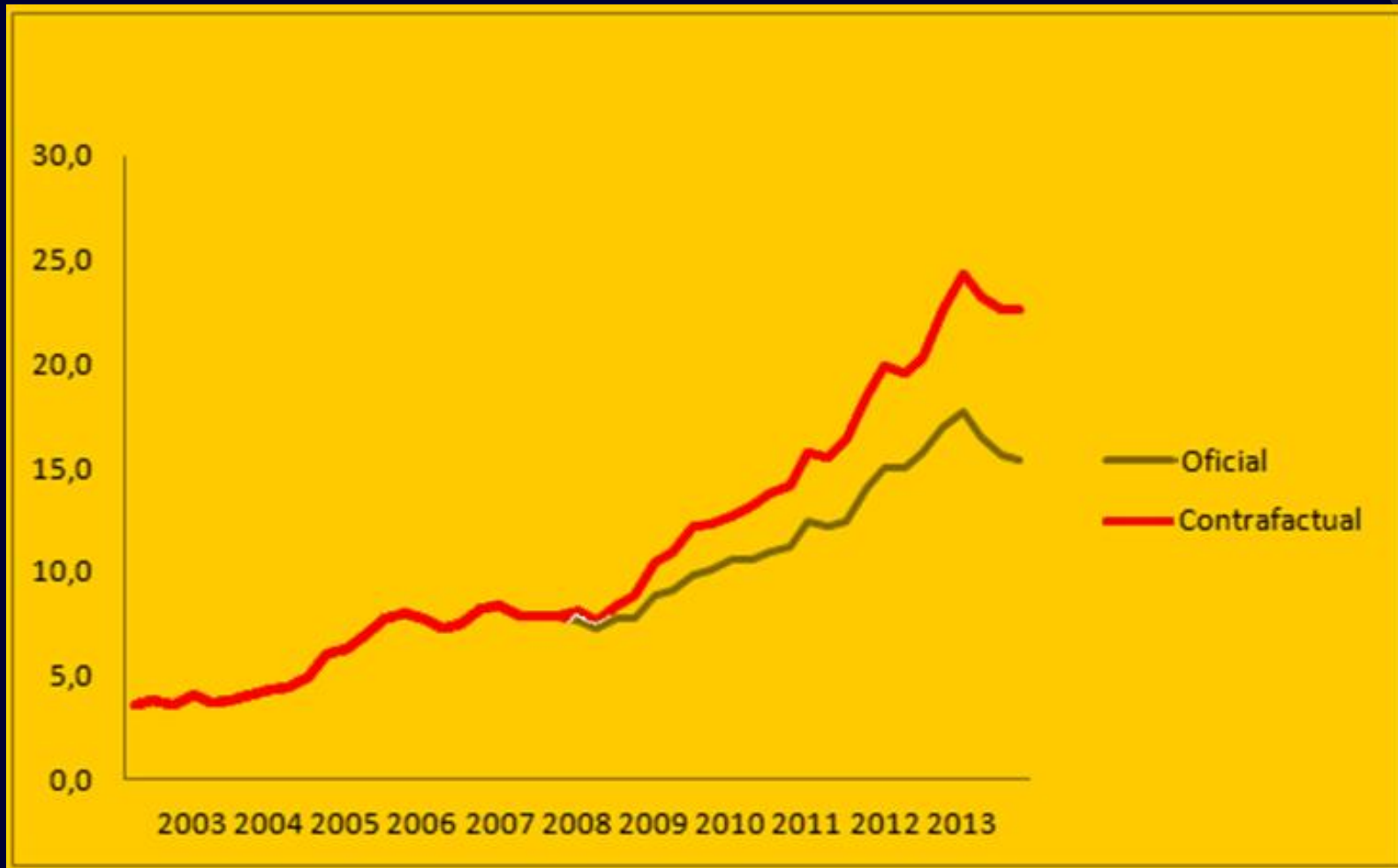
Emigration is a long rooted process in Portugal...



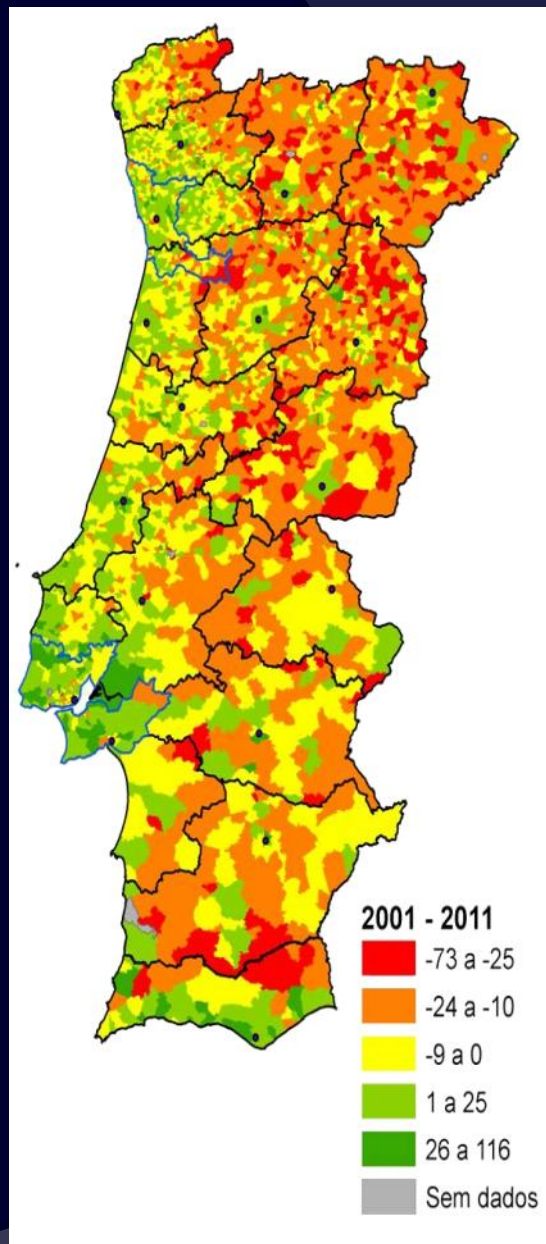
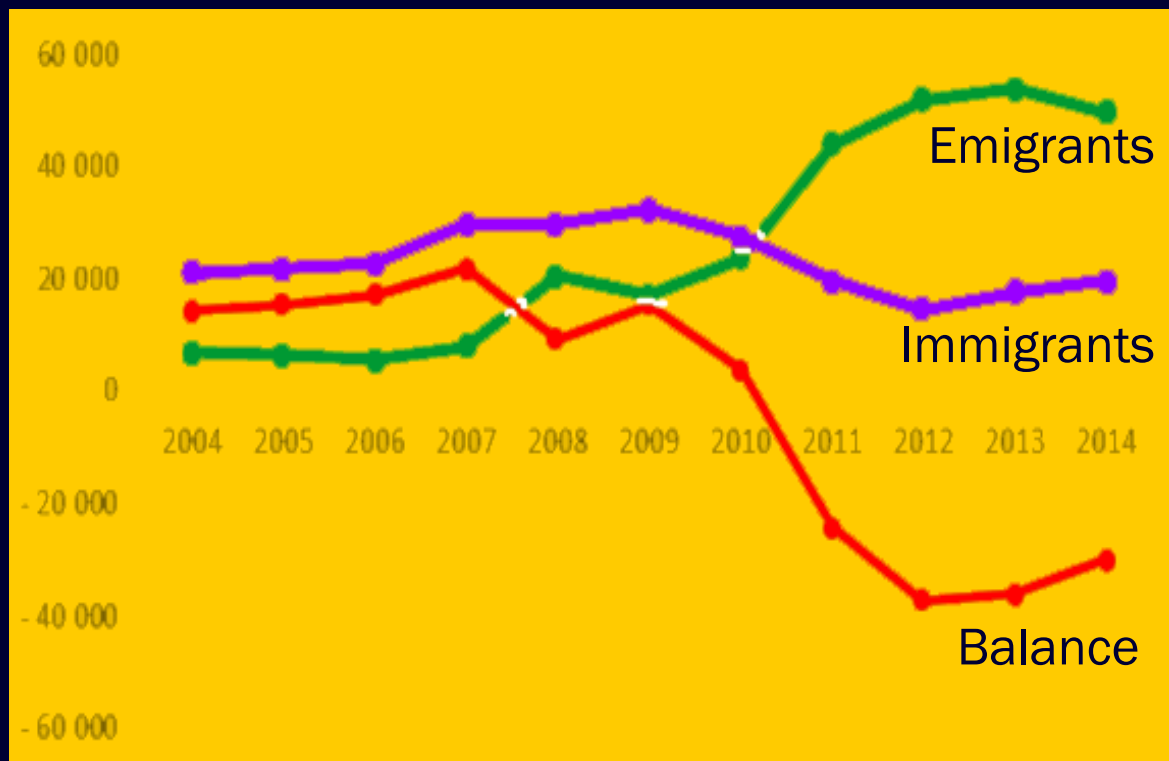
... with a pick in recent times, resulting from the so-called “global (financial) crisis” ...



... due to unprecedented unemployment levels



... with significant depopulation results...





Hundreds of rural villages, in fact entire regions, became virtually depopulated.

What can museums do in such circumstances ?



Mértola



MUSEU
DE
MÉRTOLA





MUSEU
DE
MÉRTOLA

[HOME](#)

[O MUSEU](#)

[COLECÇÕES](#)

[ACTIVIDADES](#)

[LOJA](#)

[CONTACTOS](#)

UK



HISTÓRIA



EXPOSIÇÕES



VISITA VIRTUAL

CLIQUE PARA VER A LOCALIZAÇÃO DOS NÚCLEOS

CONTACTOS

Câmara Municipal de Mértola
Praça Luís de Camões 7750 Mértola
Phone: 286 610 100 Fax: 286 610 101
museus@cm-mertola.pt
geral@cm-mertola.pt



Insígnia de cavaleiro em chumbo (séc XII)



NÚCLEOS EXPOSITIVOS

Veja os nossos principais núcleos expositivos.

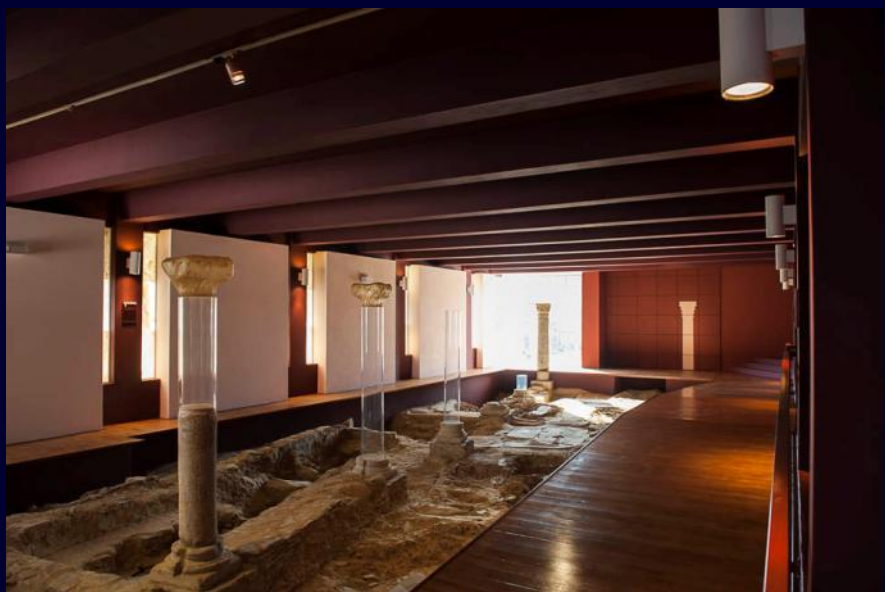
COLECÇÕES

Veja as nossas peças mais importantes.

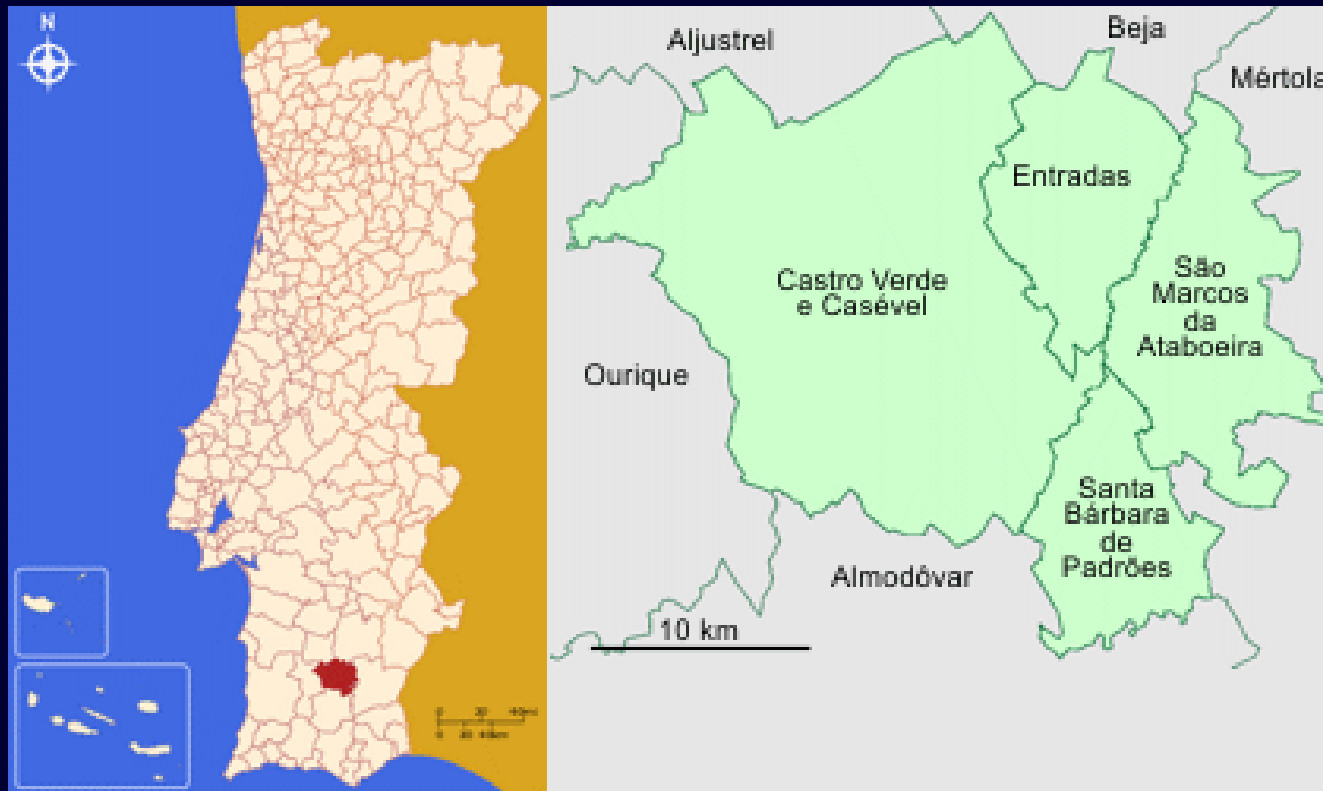


- ✓ Located in the interior of Alentejo, out of the main roads from Algarve to Lisbon
- ✓ Fairly traditional polinucleated museum
- ✓ Strong educational activities
- ✓ Strong international heritage and research networks





Entradas (Castro Verde)



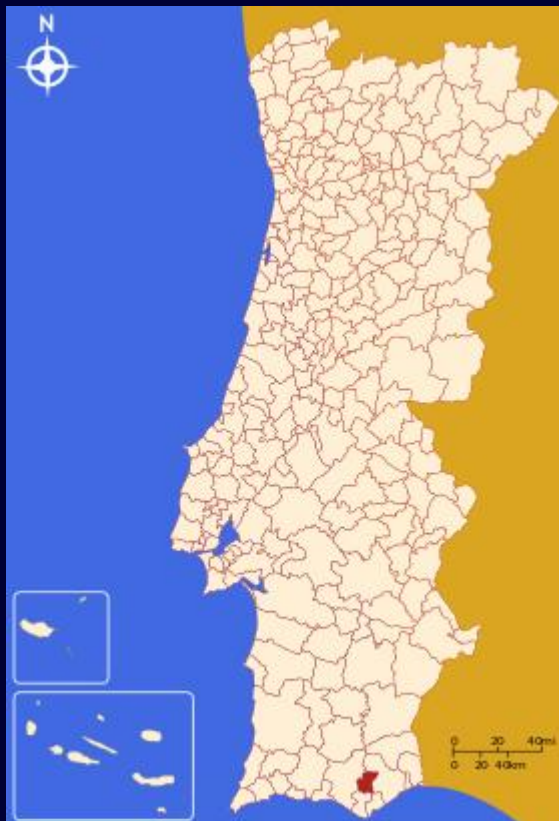


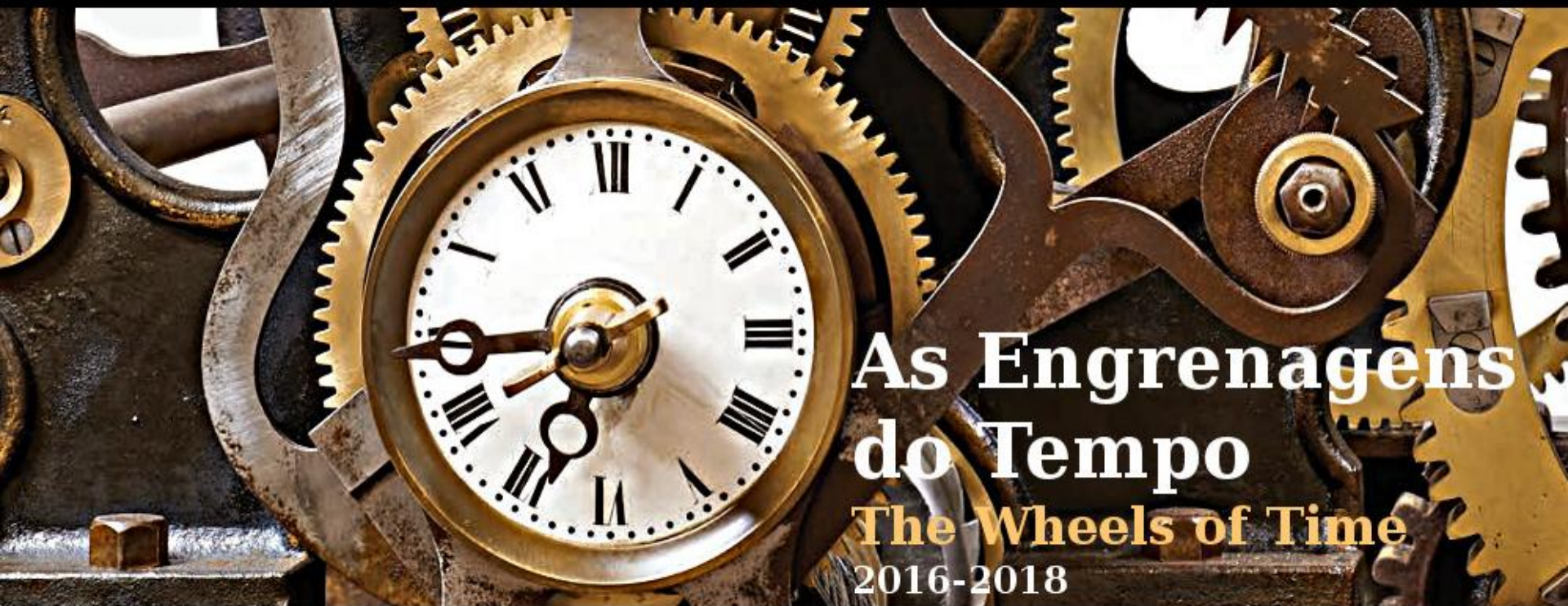
- ✓ Located in the interior of Alentejo, out of the main roads, in at the small mountain (“serra”) making the geographic frontier to Algarve
- ✓ Composed by exhibitions (mostly ethnographic), a space devoted to orality and musical traditions, where especial attention is given to the particular local viola *campaniça* (country side viola) and several logistic spaces (projection room, documentation centre, etc); especial attention is given to the *Taberna* (the typical assembling place, where traditionally mostly for men meet to drink and song the *cante alentejano*)
- ✓ In still smaller villages and places other community assembling spaces are poles of the museum (ex: Aivados community village)





S. Brás de Alportel





As Engrenagens do Tempo

The Wheels of Time
2016-2018

| |
|-------------------------------|
| Espaços |
| Identidade |
| Exposições |
| Por detrás... |
| Documentos |
| Informações |

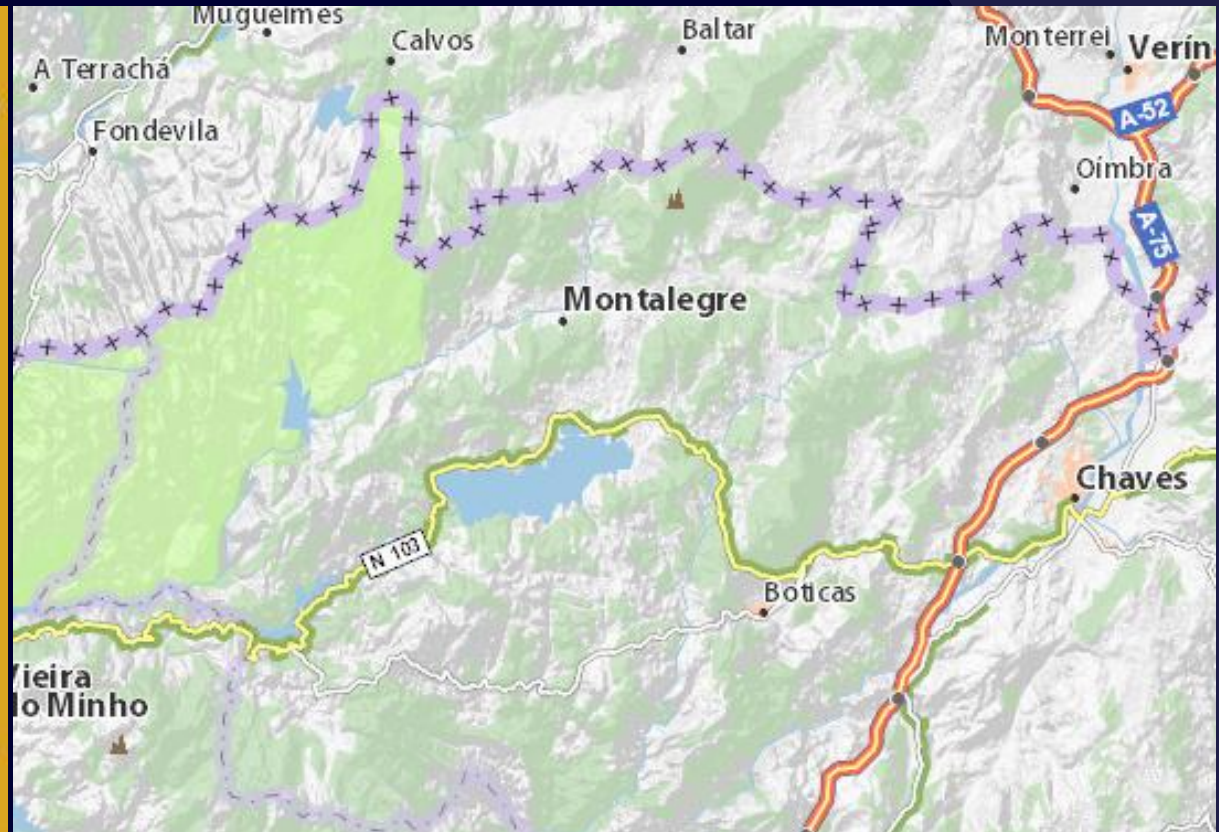
No Museu do Traje há exposições, espectáculos, palestras e muitas coisas mais. Procuramos que os nossos espaços sejam agradáveis e acolhedores para os visitantes e turistas, mas preocupamo-nos sobretudo em tornar o nosso museu cada vez mais útil e indispensável à comunidade onde estamos inseridos. Inquietam-nos os problemas da nossa terra, o rumo tomado pela região, pelo país e pelo planeta. Nas iniciativas que promovemos, procuramos transmitir essas nossas preocupações. Realizar, desestabilizar, opinar e traduzi-lo em acções concretas é um dos nossos deveres intrínsecos. Esforçamo-nos para que cada um dos nossos gestos, das nossas iniciativas, das nossas exposições seja consequente, deliberado e certeiro. Desde o espaço

- ✓ Located in the interior of Algarve, away from the most touristic areas
- ✓ Fairly traditional museum
- ✓ Strong community and educational activities
- ✓ Important participation of foreigners





Barroso



ecomuseu

de Barroso

[CONHEÇA](#)
[EXPLORE](#)
[PARTICIPE](#)
[VISITE](#)
[APRENDA](#)

Procurar

Ok



Espaço Pe. **Fontes**



Casa do **Lavrador**



Minas da **Borralha**



Aldeia Ecomuseu

V Troféu BTT "Acácio da Silva" | 3 julho Festa do Sol no Castro do Outeiro Lesenho | 18 de junho V Troféu BTT "Acácio da Silva" | 3 julho Festa do Sol no Castro di

Notícias

Eco Júnior

"Arte na Raia" no Ecomuseu de Barroso



- ✓ Located in an extreme remote, rural region, highly depopulated
- ✓ Fairly clear geographic regional delimitations:
- ✓ Differentiated rich cultural practices, especially with respects to rural life and religiosity
- ✓ Strong community activities
- ✓ Walking circuits and contact with artisans
- ✓ Folk festivals and mystical happenings: a kind of “trade-mark”



ecomuseu



de Barroso



ecomuseu

**PLANTAR HOJE,
COLHER NO FUTURO!**



**JUNTE-SE
A NÓS!**

PLANTAÇÃO DE CARVALHOS
DIA 21 - 14H30
ECOMUSEU DE BARROSO - ESPAÇO PADRE FONTES



de Barroso

ecomuseu

WORKSHOP

FELTRAGEM DE LÃ EM HÚMIDO
Por Rita Miranda



Workshop

"Desafios da sociedade de informação em que vivemos e o contributo do digital para potencial negócios em regiões desfavorecidas"
por Rómulo Gonçalves
19 de dezembro, 14h30, no espaço Padre Fontes

de Barroso

ecomuseu

Conversas com história

Séries culturais sobre a história do concelho de Montalegre

**União das Freguesias de Vilar
de Perdizes e Meixide**

Prof. José Baptista e convidados

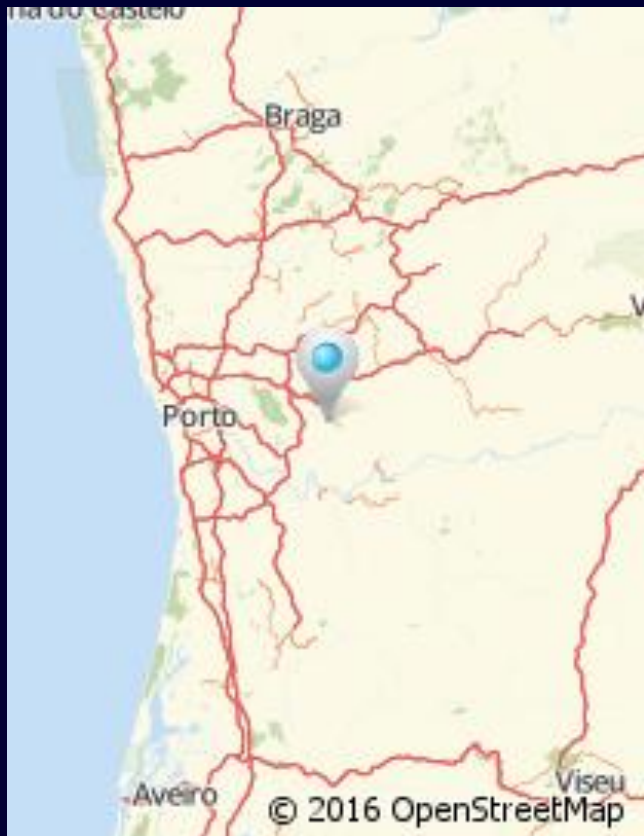


**Salão da casa do
povo de Vilar
10 de abril
21:00h**

de Barroso



Quintadona





Ader-Sousa



Contactos



Procurar

ASSOCIAÇÃO DE DESENVOLVIMENTO RURAL DAS TERRAS DO SOUSA

Ader-Sousa

Terras do Sousa

Projectos

Apoios

Aldeias de Portugal

Aldeias de Portugal nas
Terras do Sousa

Aldeia de Quintandona

Aldeia de Cabroelo

Aldeia do Burgo

Aldeia de Codeçais

Manual de Boas Práticas

Projectos > Terminados > Aldeias de Portugal

Aldeias de Portugal nas Terras de Sousa



ALDEIA DE QUINTANDONA | ALDEIA DO BURGO | ALDEIA DE CABROELO | ALDEIA DE CODEÇAIS

RECUPERAÇÃO - ALDEIA DE QUINTADONA



A aldeia de Quintandona, integrada na freguesia de Lagares, concelho de Penafiel, apresenta grandes potencialidades de desenvolvimento turístico, já que se trata de uma aldeia típica preservada, com uma beleza e arquitectura singulares, situada próximo dos grandes centros urbanos. Na verdade, a aldeia, com as suas construções em pedra de lousa e de xisto, e a paisagem



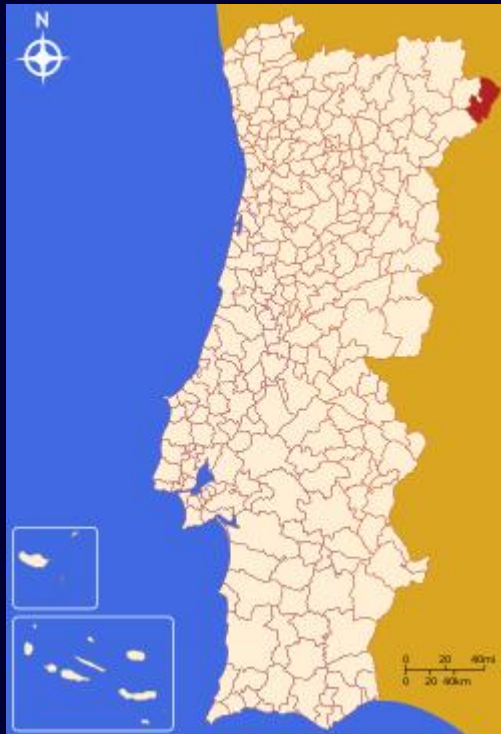
- ✓ More than a “museum”, a project of communitary development
- ✓ Public and private spaces requalified; In fact, requalification of the entire village
- ✓ Fixation of remaining population and attraction of new inhabitants
- ✓ Museologic poles referring to different village practices
- ✓ Rural tourism
- ✓ (Re) dynamism of older festivities and creation of new ones







Picote





Frauga - Associação pa l Zambolbimiento Antegradado de Picuote

[Início](#) [Associação](#) [Picote](#) [Percursos](#) [Ecomuseu](#) [Imagens](#) [Projetos](#) [Notícias](#) [Eventos](#) [Contactos](#)

TERRA MATER  CENTRO DE RECURSOS I  AMBESTIGAÇON  MULTIDISCIPLINAR



Lhêngua Língua
Antropologie Antropologia
Stória História
Arqueologie Arqueologia
Etnobotânica Etnobotânica
Filosofia

Novos Manuais Escolares em Língua Mirandesa



This project has received funding from the European Union's Horizon 2020 research and innovation programme under grant agreement No. 693669

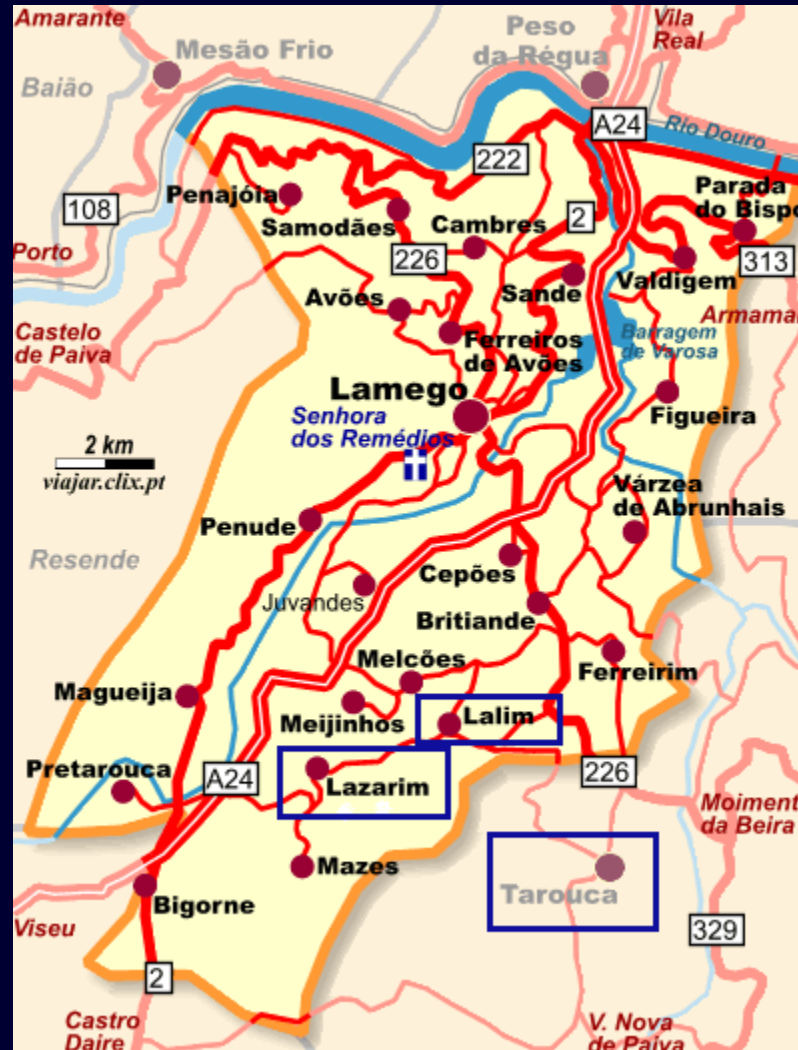


- ✓ Located in an extremely remote region, close to Spain (frontier made by the river Douro)
- ✓ More than a “museum”, a project of communitary development, promoted by neighbors, organized in an ONG: Frauga - Association for the Integrated Development of Picote; this ONG is integrated in another more encompassing one (either in the geographic as in the disciplinary sense): TERRA MATER
- ✓ Public and private spaces requalified with the financial support of the electricity company exploiting a near by dam and as a social mitigating policy
- ✓ Several museologic poles have been created, but the main focus is on the development of the village and the surrounding region, including scientific research, assistance to economic practices, touristic routes, etc.





Lazarim





CIMI - Centro Interpretativo da Máscara Ibérica

Local Business

Like

Save

Suggest Edits

...

5.0 ★ · 3 public ratings

Unofficial Page · Located In [Lazarim, Viseu, Portugal](#)



This project has received funding from the European Union's Horizon 2020 research and innovation programme under grant agreement No. 693669



- ✓ Intense depopulation of the region, with many villages completely abandoned
- ✓ Deep attachment to popular festivities, with a particular type of masks made locally and extremely identificatory
- ✓ Tensions between youngsters and elders; “modernists” and “traditionalist”
- ✓ Center for Interpretation of Masks (more than “just” a museum): exhibition, production, rest and encounter spaces...
- ✓ Integration in a vast net of villages with mask rituals, in Portugal and Spain



Village of MAZES (close to Lazarim)

Higher in the mountain, recently abandoned,
place of aggregation for remembering and sceneries











What can museums do in such circumstances ?

Some (provocative) reflections :

- ✓ Shall museums be the most adequate frame, or even a possible partner, to fight against the abandoning of territories, by opposing community developmental strategies?
- ✓ What are exactly museums and how to differentiate them (if needed...) from other developmental community devices: cooperatives, cultural centers, socio-economic associations, etc.?
- ✓ Why to stick on museums when perhaps other more encompassing frames would maybe easily achieve the same community goals?
- ✓ In sum: Who needs museums – instead of employment generators - in (virtually) abandoned lands?

What can museums do in such circumstances ?

My (modest) answer :

- ✓ Museums are necessarily to evolve and maybe be redefined in vast regions affected by emigration.
- ✓ Museums should be part / lead community empowering and developmental projects, making their expertise and facilities available for the purpose
- ✓ A new frame is needed and in fact already occurs in some countries where traditional separated institutions are merged, giving place to a new concept...

GLAM Plus

(Galleries, Libraries, Archives and Museums + Health Center, Fiscal Services, Newspapers and Web Access Point, Coffee Shop, etc.)





**EULAC
MUSEUMS**

Museums and Community:
Concepts, Experiences and Sustainability in
Europe, Latin America and the Caribbean

PORTUGAL

This project has received funding from the European Union's Horizon 2020
research and innovation programme under grant agreement No. 693669

